

# JUKI®

MODEL **DDL-552-2 • 553-2 • 555-2**

High Speed, Single Needle, Lockstitch Industrial Sewing Machine  
Equipped with an Automatic Undertrimmer

MODEL **DLN-415-2**

High Speed, Single Needle, Needle Feed, Lockstitch Industrial Sewing Machine  
Equipped with an Automatic Undertrimmer

MODEL **DLU-450-2**

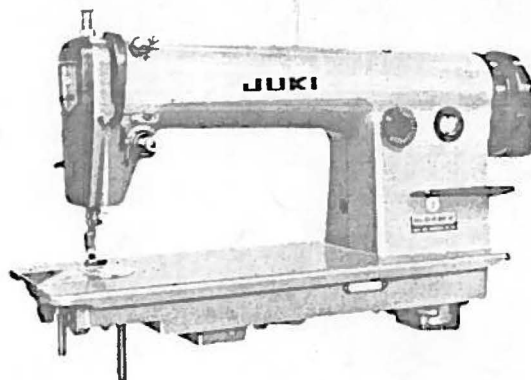
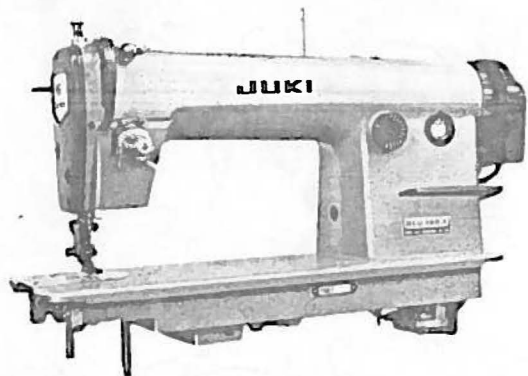
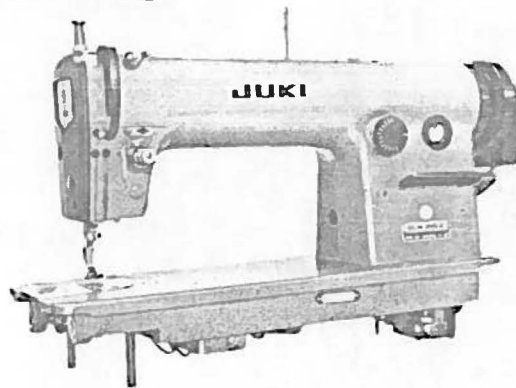
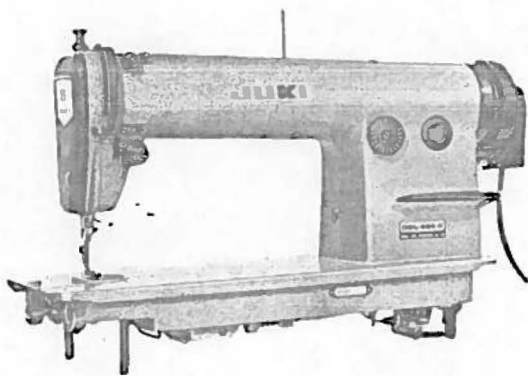
High Speed, Single Needle, Top and Bottom Feed Lockstitch Industrial Sewing Machine  
Equipped with an Automatic Undertrimmer

MODEL **DLD-432-2**

High Speed, Single Needle, Differential Feed Lockstitch Industrial Sewing Machine  
Equipped with an Automatic Undertrimmer

## PARTS \* BOOK

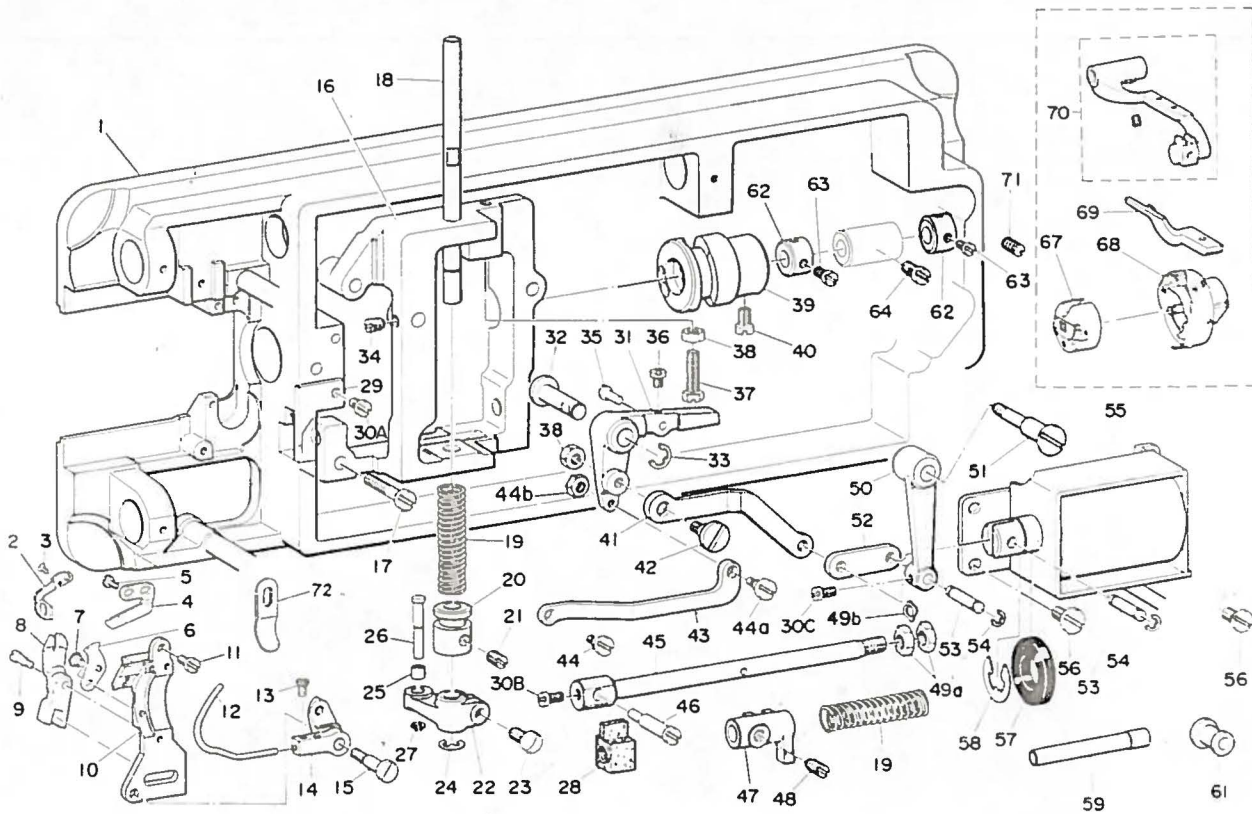
REVISION No. 6



**TOKYO JUKI INDUSTRIAL CO., LTD.**

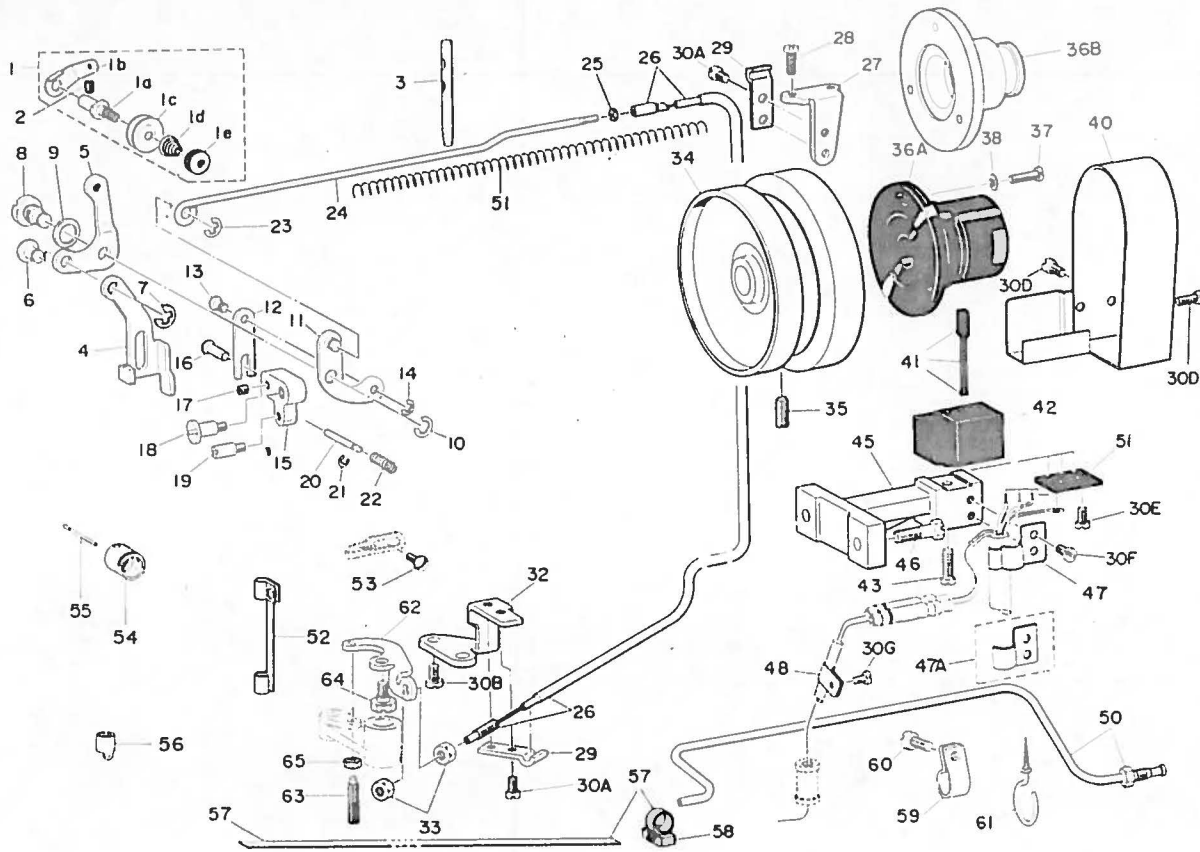
From the library of: Superior Sewing Machine & Supply LLC

# 1. THREAD TRIMMER COMPONENTS

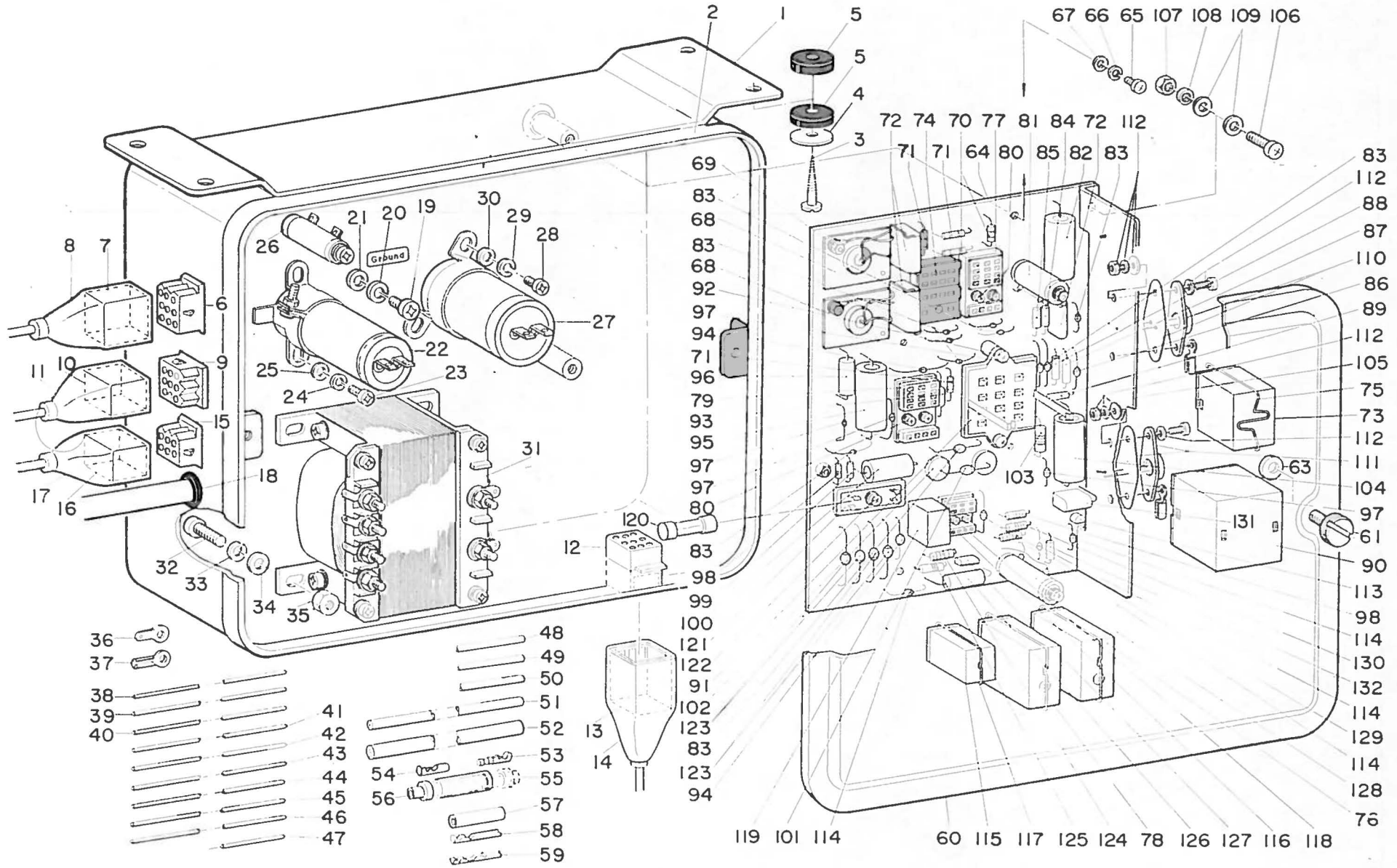


Ref. No.	Part No.	Description	Amt. Req.	Ref. No.	Part No.	Description	Amt. Req.
1	D-1101-555-BA0	Frame assembly	1	41	D-2461-555-B00	Thread trimmer lever link	1
2	D-2405-555-B00A	Thread guide, for knife	1	42	SD-0790432-SD	... Hinge screw	1
3	SS-2060210-SP	... Screw	1	38	NS-6150310-SP	... Nut	1
4	D-2406-555-B00	Counter knife	1	43	D-2419-555-B00	Take-up thread picker link	1
5	SS-6080710-SP	... Screw	2	44	SD-0600401-TP	... Hinge screw	1
6	D-2402-555-BA0	Moving knife assembly	1	44a	SD-0600402-TP	... Hinge screw B	1
7	SD-0500095-TH	... Hinge screw	1	44b	NS-6620310-SD	... Nut	1
8	D-2411-555-B00	Forked base, for knife	1	45	D-2424-555-B00A	Knife driving shaft	1
9	SD-0460702-SP	... Hinge screw	1	46	D-2407-555-B00	Pin, for knife forked base	1
10	D-2401-555-B00A	... Mounting base	1	30B	SS-7110740-TP	... Screw	1
11	SS-7111120-SP	... Screw	1	47	D-2414-555-B00	Cam roller shaft forked bracket	1
12	D-2408-555-B00	Take-up thread picker	1	48	SS-8660970-TP	... Screw	1
13	SS-6090510-SP	... Screw	2	49a	NS-6680410-SP	Knife driving shaft nut	2
14	D-2420-555-B00	... Mounting bracket	1	49b	WZ-0850302-K0	... Washer	1
15	SD-0641451-SP	... Hinge screw	1	50	D-2465-555-B00A	Lever driving magnet	1
16	D-2412-555-B00A	Thread trimmer mounting base	1	51	SD-0951905-SP	... Hinge screw	1
17	SS-6153040-SP	... Screw	2	52	D-2463-555-B00	Link driving magnet	1
18	D-2425-555-B00	Slide shaft	1	53	D-2464-555-B00	... Pin	2
19	D-2423-555-B00	... Pressing spring	2	54	RE-0400000-K0	... Snap ring	3
20	D-2418-555-B00	Cam roller shaft slide collar	1	30C	SS-7110740-TP	... Screw	1
21	SS-8660810-TP	... Screw	2	55	D-2460-555-BA0	Solenoid	1
22	D-2415-555-B00	Cam roller shaft bracket	1	56	SS-7151210-SP	... Screw	3
23	SS-7151210-SP	... Clamp screw	1	57	D-2468-555-B00	Rubber plunger	1
24	RE-0600000-K0	Slide shaft snap ring	1	58	RE-1200000-K0	... Snap ring	1
25	D-2427-555-B00	Cam roller	1	59	D-2469-555-B00	Tube, for magnet cord	1
26	D-2428-555-B00A	Cam roller shaft	1	61	D-2467-555-B00	Rubber plug	1
27	D-2430-555-B00	... Snap ring	1	62	CS-0791016-SH	Thrust collar	2
28	D-2426-555-B00A	Oil sponge	1	63	SS-6110420-TP	... Screw	4
29	D-2422-555-B00	Groove cover	1	64	SS-7150940-SP	Screw, for hook shaft center bushing	1
30A	SS-7110710-SP	... Screw	1	67	D-1837-555-BAA	Bobbin case assembly	(1)
31	D-2416-555-B00	Thread trimmer lever	1	68	D-1830-555-BA0	Hook assembly	1
32	D-2431-555-B00	Thread trimmer shaft	1	69	D-1835-555-B00	Bobbin case holder positioning finger	1
33	RE-0600000-K0	... Snap ring	1	70	D-1602-555-B00	Feed bar assembly	1
34	SS-8660610-TP	... Screw	1	71	SS-8115230-SP	Screw, for hook shaft rear bushing	1
35	D-2417-555-B00	Thread trimmer lever pin	1	72	D-1836-555-B00	Thread guide, for hook	1
36	SS-6090810-SP	... Screw	1				
37	SS-6151920-SP	Thread trimmer lever stopper	1				
38	NS-6150310-SP	Thread trimmer lever nut	1				

## 2. TENSION RELEASE COMPONENTS



Ref. No.	Part No.	Description	Amt. Req.	Ref. No.	Part No.	Description	Amt. Req.
1	D-3161-555-BA0	First tension post assembly	1	EXCLUSIVE PARTS FOR			
1a	D-3161-555-B00	First tension post	1	DDL-552-2-1, DDL-552-2-3, DDL-553-2-1,			
1b	D-3162-555-B00	Thread guide	1	DDL-553-2-3, DDL-555-2-1, DDL-555-2-3			
1c	B-3214-047-000	Tension disc	2	36B	D-1230-552-B00	Hand wheel flange	1
1d	D-3168-555-B00	Tension spring	1	37	SS-7111410-TP	Screw	3
1e	B-3216-047-000	Tension nut	1	38	WP-0480856-SD	Washer	3
2	SS-8110510-SP	Screw	1	EXCLUSIVE PARTS FOR			
3	B-1114-012-000	Needle thread guide pin	1	DDL-552-2-2, DDL-552-2-4, DDL-553-2-2,			
4	D-1515-555-B00	Lifting lever	1	DDL-553-2-4, DDL-555-2-2, DDL-555-2-4			
5	D-1516-555-B00	Link	1	36A	D-2601-555-B00A	Synchronizer slip ring	1
6	D-1526-555-B00	Hinge screw	1	37	SS-7111410-TP	Screw	3
7	RE-0500000-K0	Snap ring	1	38	WP-0480856-SD	Washer	3
8	D-1517-555-B00	Hinge pin	1	40	D-2610-555-B00A	Cover	1
9	B-3431-581-000	Gasket	1	30D	SS-7110740-TP	Screw	2
10	RE-0600000-K0	Snap ring	1	41	D-2603-555-BA0	Carbon brush assembly	3
11	D-3157-555-BA0	Tension release link assembly	1	42	D-2608-555-B00	Carbon brush holder	1
12	D-3156-555-B00	Tension release plate	1	43	SS-7112420-SP	Screw	1
13	D-3154-555-B00	Connecting pin	1	44	D-2607-555-BA0	Carbon brush presser plate	1
14	RE-0300000-K0	Snap ring	1	30E	SS-7110740-TP	Screw	2
15	D-3153-555-B00	Tension release lever	1	45	D-2609-555-B00A	Carbon brush holder supporter	1
16	D-3155-555-B00	Pin	1	46	SS-9151740-CP	Screw	2
17	SS-8620610-TP	Screw	1	47	D-2611-555-B0B	Cable holder (B)	1
18	SD-0641003-SP	Hinge stud	1	47A	D-2611-555-B00A	Cable holder	(1)
19	D-2613-232-000	Lifting lever hinge pin	1	30F	SS-7110740-TP	Screw	2
20	D-3127-555-B00	Tension release supporting pin	1	48	B3538-112-000	Cable presser plate	1
21	RE-0250000-K0	Snap ring	1	30G	SS-7110710-TP	Screw	1
22	D-3133-555-B00	Spring	1	50	D-3521-555-BA0	Oil tube assembly	1
23	RE-0500000-K0	Tension release link pin snap ring	1	51	B-3404-122-000	Oil return tube spring	1
24	D-3165-555-B00	Tension release rod	1	52	D-3536-555-B00	Oil return tube presser plate	1
25	NS-6060310-SP	Nut	1	53	SS-5090610-SP	Screw, for frame thread guide	1
26	D-3150-555-BA0	Tension release wire assembly	1	B-3111-126-0A0	Tension post assembly	(1)	
27	D-3163-555-B00	Flexible tube support plate	1	54	B-3111-126-000	Tension post	1
28	SS-7111120-SP	Screw	2	55	D-3127-012-000	Tension release pin	1
29	D-3164-555-B00	Outer presser plate 2	2	56	B-1418-552-A00	Needle thread guide	1
30A	SS-7110740-TP	Screw	4	57	D-6050-555-B00	Cord wire	20mm
32	D-3167-555-B00A	Tension release wire presser plate	1	58	D-6052-555-B00	Closure B	3
30D	SS-7110740-TP	Screw	2	59	D-2112-555-B00	Cord set plate A	1
33	NS-6620310-SP	Wire set nut	2	60	SS-7150840-SP	Screw	1
34	D-1217-555-B00	Hand wheel	1	61	D-2113-555-B00	Cord holder B	2
35	SS-8151550-SP	Screw	2	62	D-3169-555-B00	Wire driving lever	1
				63	D-3170-555-B00	Pin	1
				64	SD-0630275-SP	Hinge screw	1
				65	NS-6110310-SP	Nut	1



**VOLT ZONE CODE**

A = 3-phase 200V 220V 240V      D = Single phase 100V 115V  
 B = 3-phase 220V 380V 440V      E = Single phase 200V 220V 240V  
 C = 3-phase 380V 415V              F = When QUICK-MOTOR is used

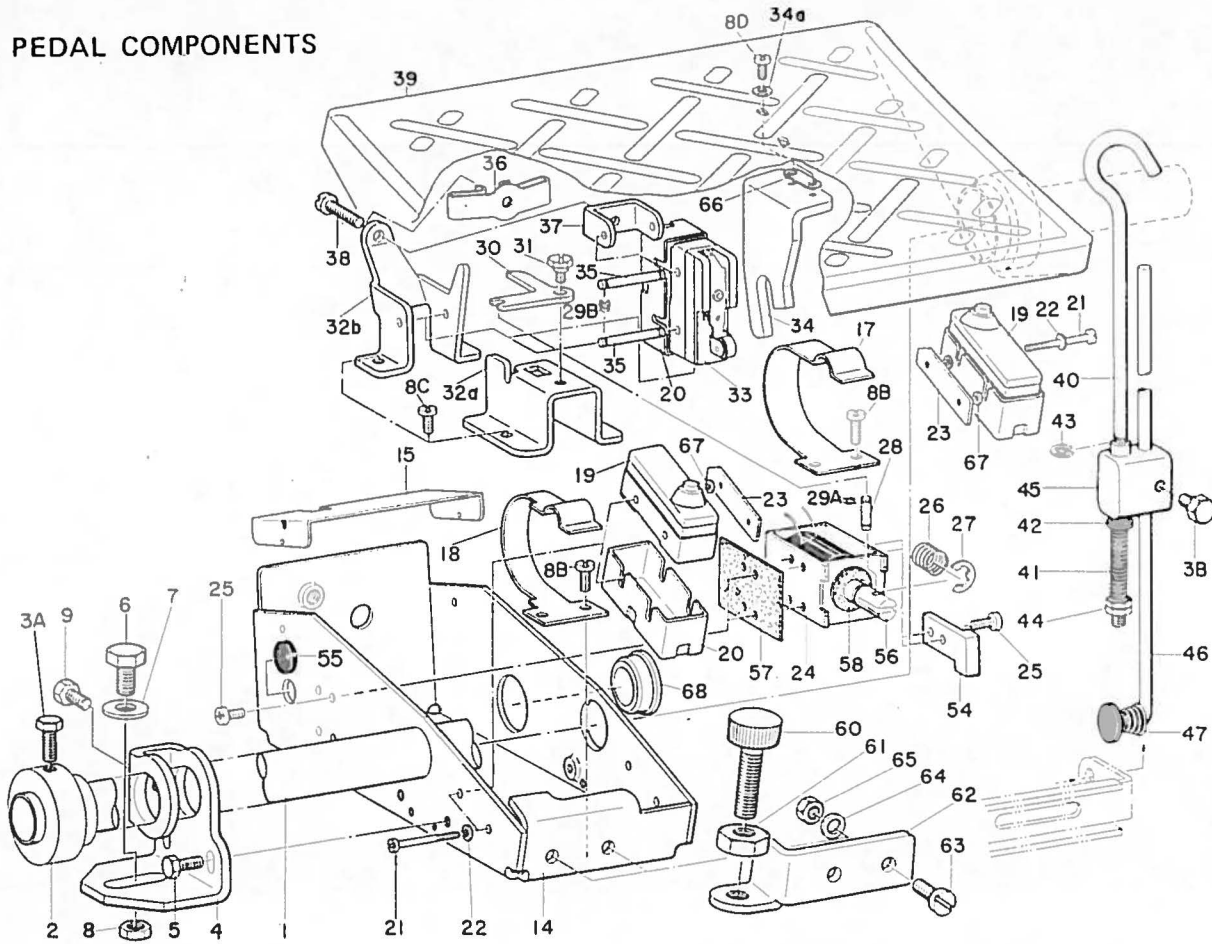
Ref. No.	Part No.	Description	Volt zone code	Circuit code	Amt. Req.			
					-2	-2B	-4	-4B
	D-6200-555-BACC	Control box complete	A		1			
	D-6382-555-BACC	Control box complete	B		1			
	D-6380-555-BACC	Control box complete	C		1			
	D-6100-555-BABC	Control box complete	D		1			
	D-6220-555-BABC	Control box complete	E		1			
	D-6382-555-BAAC	Control box complete	F		1			
	D-6200-555-EACC	Control box complete	A			1		
	D-6382-555-EACC	Control box complete	B			1		
	D-6380-555-EACC	Control box complete	C			1		
	D-6100-555-EABC	Control box complete	D			1		
	D-6220-555-EABC	Control box complete	E			1		
	D-6382-555-EAAC	Control box complete	F			1		
	D-6200-555-DACC	Control box complete	A				1	
	D-6382-555-DACC	Control box complete	B				1	
	D-6380-555-DACC	Control box complete	C				1	
	D-6100-555-DABC	Control box complete	D				1	
	D-6220-555-DABC	Control box complete	E				1	
	D-6382-555-DAAC	Control box complete	F				1	
	D-6200-555-FACC	Control box complete	A					1
	D-6382-555-FACC	Control box complete	B					1
	D-6380-555-FACC	Control box complete	C					1
	D-6100-555-FABC	Control box complete	D					1
	D-6220-555-FABC	Control box complete	E					1
	D-6382-555-FAAC	Control box complete	F					1
1	D-6045-555-BA0C	Control box asm.	A,D,E,F		1			
	D-6045-555-BAB	Control box asm., for 250V	B,C		1			
	D-6109-555-BA0C	Control box asm., for wiper	A,D,E,F		1	1	1	1
	D-6109-555-BAB	Control box asm., for wiper 250V	B,C		1	1	1	1
2	D-6049-555-B00	Gasket			1	1	1	1
3	SK-3514000-SD	Control box set screw			4	4	4	4
4	WP-0551626-SD	... Washer A			4	4	4	4
5	D-6056-555-B00	... Rubber cushion B			8	8	8	8
6	D-6027-555-B0B	9 pole socket, black	A,D,E,F	X1-9	1	1	1	1
	D-6128-555-B0B	9 pole plug, white 600V	B,C	X1-9	1	1	1	1
7	D-6027-555-B0A	9 pole plug, black	F	X1-9	1	1	1	1
8	D-6002-555-B00	... Cover, black	F		1	1	1	1
9	D-6028-555-B0B	9 pole socket, white		Z1-9	1	1	1	1
10	D-6028-555-B0A	9 pole plug, white		Z1-9	1	1	1	1
11	D-6057-555-B00	... Cover (C)			1	1	1	1
12	D-6072-555-B00	9 pole socket, blue		Y1-9	1	1	1	1
13	D-6071-555-B00	9 pole plug, blue		Y1-9	1	1	1	1
14	D-6070-555-B00	... Cover (D)			1	1	1	1
15	D-6029-555-B0B	6 pole socket, white		W1-6	1	1	1	1
16	D-6029-555-B0A	6 pole plug, white		W1-6	1	1	1	1
17	D-6001-555-B00	... Cover, black			1	1	1	1
18	D-6016-555-B00	Rubber bushing			1	1	1	1
19	SM-4040811-M0	Ground wire set screw			1	1	1	1
20	WS-0411002-KZ	... Spring washer			1	1	1	1
21	WP-0450800-M0	... Washer			1	1	1	1
22	HCA-630J501B	Electrolytic capacitor 500 µF		C4	1	1	1	1
23	SM-4030611-SE	... Screw			2	2	2	2
24	WS-0310702-KZ	... Spring washer			2	2	2	2
25	WP-0330500-SE	... Washer			2	2	2	2

Ref. No.	Part No.	Description	Volt zone code	Circuit code	Amt. Req.			
					-2	-2B	-4	-4B
26	HR-602210P32	Enamelized resistor 1 Ω G8		r15		1		1
27	HCA-630H1024	Electrolytic capacitor 1000µF 63 WV		C11		1		1
28	SM-4040811-SE	... Screw				3		3
29	WS-0411002-KZ	... Spring washer				3		3
30	WP-0450800-SE	... Washer				3		3
31	D-6038-555-B0B	Transformer 3-phase 200, 220, 240V	A		1		1	1
	D-6038-555-B0D	Transformer 3-phase 220, 380, 440V	B,F		1		1	1
	D-6038-555-B0A	Transformer 3-phase 380, 415V	C		1		1	1
	D-6038-555-B0C	Transformer single phase 100, 115V	D		1		1	1
32	SM-4051211-SE	... Screw			4	4	4	4
33	WS-0511302-KZ	... Spring washer			4	4	4	4
34	WP-0550800-SE	... Washer			4	4	4	4
35	NM-6050011-0E	... Nut			4	4	4	4
36	D-6092-555-B00	Terminal	A,B,C		2	2	2	2
			D,E		1	1	1	1
37	HP-1A43PEC12	Solderless terminal	A,B,C,D,E		5	5	5	5
			F		9	9	9	9
38	HW-2F18S1210	Electric wire, black			0.37 M	0.37 M	0.37 M	0.37 M
39	HW-2F18S1211	Electric wire, brown			0.57 M	0.57 M	0.57 M	0.57 M
40	HW-2F18S1212	Electric wire, red			0.37 M	0.37 M	0.37 M	0.37 M
41	HW-2F18S1213	Electric wire, orange			0.20 M	0.20 M	0.20 M	0.20 M
42	HW-2F18S1214	Electric wire, yellow			0.55 M	0.55 M	0.55 M	0.55 M
43	HW-2F18S1215	Electric wire, green			0.24 M	0.24 M	0.24 M	0.24 M
44	HW-2F18S1216	Electric wire, blue			0.14 M	0.14 M	0.14 M	0.14 M
45	HW-2F18S1217	Electric wire, purple			0.20 M	0.20 M	0.20 M	0.20 M
46	HW-2F18S1218	Electric wire, grey			0.20 M	0.20 M	0.20 M	0.20 M
47	HW-2F18S1219	Electric wire, white			0.65 M	0.65 M	0.65 M	0.65 M
48	HW-5F18S1228	2-core cabtyre cords	A,B,C,D,E		0.60 M	2.10 M	0.60 M	0.60 M
			F		1.12 M	2.62 M	1.12 M	1.12 M
49	HW-5F18S16A8	3-core cabtyre cords	F		1.50 M	1.50 M	1.50 M	1.50 M
50	HW-5F18S1268	6-core cabtyre cords			1.05 M		1.05 M	1.50 M
	HW-5F18S12D8	6-core cabtyre cords					1.50 M	1.50 M
51	HW-5F18S1288	8-core cabtyre cords				1.05 M		1.05 M
52	HW-5F18S1298	9-core cabtyre cords			1.72 M	1.72 M	1.72 M	1.72 M
53	D-6063-555-B00	Plug			2	2	2	2
54	D-6064-555-B00	Receptacle			2	2	2	2
55	D-6066-555-B00	Sleeve male (obsoleted)			(2)	(2)	(2)	(2)
	D-6126-555-B00	Sleeve male, green (obsoleted)				(2)		(2)
56	D-6065-555-B00	Sleeve female			2	2	2	2
	D-6127-555-B00	Sleeve female, green				2		2
57	HP-2K230EC12	Splice			6	6	6	6
58	D-6043-555-B00	Pin-shape terminal male	A,B,C,D,E		15	19	21	23
			F		17	21	23	25
59	D-6042-555-B00	Pin-shape terminal female	A,B,C		22	26	26	30
			D,E,F		20	24	24	28
60	D-6044-555-B00	Control box cover			1	1	1	1
61	B-6007-771-000	... Screw			2	2	2	2
63	D-6003-555-B00	... Washer			4	4	4	4
64	D-6013-555-B00A	Printed wire board			1	1	1	1
65	SM-4040811-SE	... Screw			4	4	4	4
66	WS-0411002-KZ	... Spring washer			4	4	4	4
67	WP-0450800-SE	... Washer			4	4	4	4

Ref. No.	Part No.	Description	Volt zone code	Circuit code	Amt. Req.			
					-2	-2B	-4	-4B
68	D-6088-555-BA0	Bi-directional-triode thyristor asm.	A.B.C	FLS 1. 2	2	2	2	2
			D.E	FLS 1	1	1	1	1
69	D-6091-555-B00	Spacer	A.B.C		4	4	4	4
			D.E		2	2	2	2
	SM-4042011-SE	Screw A	A.B.C		2	2	2	2
			D.E		1	1	1	1
	SM-4041211-RE	Screw B	A.B.C		2	2	2	2
			D.E		1	1	1	1
	WP-0450800-SE	Washer	A.B.C		4	4	4	4
			D.E		2	2	2	2
	WS-0411002-KZ	Spring washer	A.B.C		6	6	6	6
			D.E		3	3	3	3
	NM-6040012-OE	Nut	A.B.C		4	4	4	4
			D.E		2	2	2	2
70	HR-1322101-61	Resistor 100 Ω 1/2	A.B.C	r8. 9	2	2	2	2
			D.E	r8	1	1	1	1
71	HR-1322100-61	Resistor 10 Ω 1/2	A.B.C	r3 10.11	3	3	3	3
			D.E	r3.10	2	2	2	2
			F	r3	1	1	1	1
72	HCR-401V22-S1	Capacitor 0.22 μF	A.B.C	C3.7.8	3	3	3	3
			D.E	C3.7	2	2	2	2
			F	C3	1	1	1	1
73	D-6098-555-B00	Relay MY4P DC24V		R1	1	1	1	1
74	D-6099-555-B00	Socket PY-14-0			1	1	1	1
75	D-6100-555-B00	Stopper PMC			1	1	1	1
76	D-6067-555-B00	Relay 2P (MQ407)		R3	1	1	1	1
77	D-6068-555-B00	Socket (2T)			1	1	1	1
78	D-6078-555-B00	Relay 4P (MQ408)		R4	1	1	1	1
79	D-6081-555-B00	Socket (4T)			1	1	1	1
80	D-6082-555-B00	Spacer			4	6	4	6
	SM-4031401-SE	Screw			4	4	4	4
	WP-0290500-SE	Washer			4	4	4	4
	WS-0270602-KZ	Spring washer			4	4	4	4
	NM-6030202-SE	Nut			4	4	4	4
81	HR-6722121-52	Enamelized resistor 120 Ω 5		r2	1	1	1	1
82	HCA-630J22-08	Capacitor 22 μF 50WV		C9				1
83	HG-2674011-2P	Diode V06E		D7.8.9. 10.11.13 16.18.19	7	7	9	9
84	HR-1522821-51	Resistor 820 Ω 1		r13				1
85	HR-1522181-61	Resistor 180 Ω 1		r12				1
86	HG-2672011-7P	Diode V03C		D6	1	1	1	1
87	HR-1322200-61	Resistor 20 Ω 1/2		r4	1	1	1	1
88	HR-1322109-61	Resistor 1 Ω 1/2		r6	1	1	1	1
89	D-6106-555-B00	Arc suppressor C		S3				1
90	D-6130-555-B00	Relay DC12V		R2	1	1	1	1
91	D-6131-555-B00	Socket			1	1	1	1
92	SM-4042011-SE	Screw			2	2	2	2
	WS-0411002-KZ	Spring washer			2	2	2	2
	WP-0450800-SE	Washer			2	2	2	2
	NM-6040012-OE	Nut			2	2	2	2
	D-6132-555-B00	Spacer			2	2	2	2
93	D-6054-555-B00A	Arc suppressor A		S2	1	1	1	1

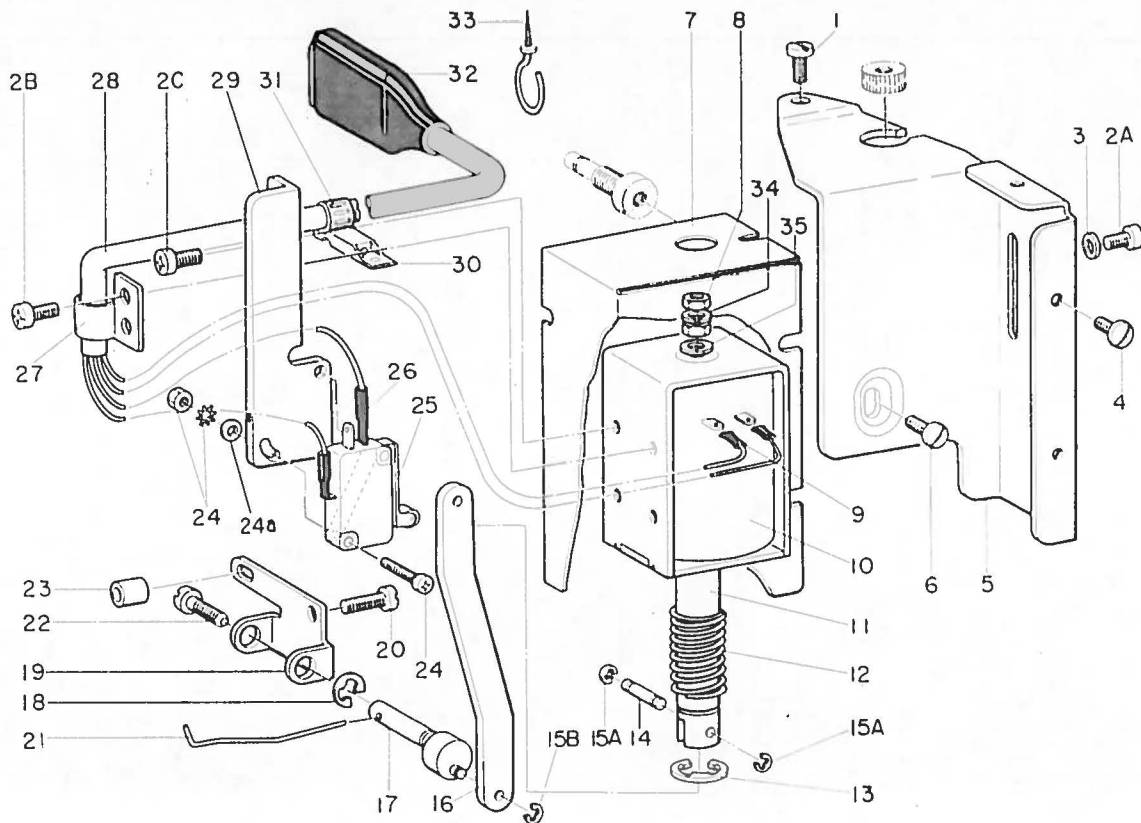
Ref. No.	Part No.	Description	Volt zone code	Circuit code	Amt. Req.			
					-2	-2B	-4	-4B
94	HG-2674011-7P	Diode V03E		D5.14	1	1	2	2
95	HCA-630J10-14	Capacitor 100 μF		C5	1	1	1	1
96	HR-1622470-31	Resistor 47 Ω 2		r5 1	1	1	1	1
97	HG-2672011-2P	Diode V06C		D12.15 17.25	2	3	3	4
				r16.19		2		2
98	HR-1122473-61	Resistor 47 k Ω 1/8		r7	1	1	1	1
99	HR-1322221-61	Resistor 220 Ω 1/2		C6	1	1	1	1
100	HCA-630J50-P3	Capacitor 5 μF		D20		1		1
101	HG-2672014-7P	Diode IN5624				2		2
102	D-6125-555-B00	Radiator plate		r22	1			1
103	HR-1522100-61	Resistor 10 Ω K1		C12	1			1
104	HCA-101N10-04	Capacitor 10 μF			1			1
105	D-6096-555-B00	Radiator plate (B)			2			2
106	SM-4041011-SE	Screw			1	1	2	2
107	NM-6040012-OE	Nut			2	2	2	2
108	WS-0411002-KZ	Spring washer			2	2	2	2
109	WP-0450800-SE	Washer			4	4	4	4
110	HT-4L80060-P0	Transistor 25C 1030c		Tr		1		1
111	HS-2610199-P0	SCR 25F1116		SCR1	1			1
112	SM-4031011-SE	Screw			2	2	2	2
	WS-0310702-KZ	Spring washer			2	2	2	4
	WP-0330500-SE	Washer			2	2	2	4
	NM-6030011-OE	Nut			2	2	2	4
113	HS-2110147-S0	SCR 25F657		SCR2	1			1
114	HG-2671011-5P	Diode F14A		D21.22 23.24		4		4
115	D-6113-555-B00	Relay MHU-22P		R5	1			1
116	D-6114-555-B00	Socket PM08-0			1			1
117	D-6115-555-B00	Stopper			1			1
118	SM-4031401-SE	Screw			2			2
	WP-0260500-SE	Washer			2			2
	WS-0260500-SE	Spring washer			2			2
	NM-6030202-SE	Nut			2			2
119	D-6077-555-B00	CR 0.5 μF 400WV 27 Ω 1/2		CR	1	1	1	1
120	D-6031-555-B00	Fuse		F	3			3
	D-6110-555-B00	Fuse		F		3		3
121	D-6030-555-B00	Holder			1	1	1	1
122	SM-4031211-SE	Screw			1	1	1	1
	WS-0310702-KZ	Spring washer			1	1	1	1
	NM-6050011-OE	Nut			1	1	1	1
123	HG-2474012-3P	Diode V01E		D1-4	4			4
	HG-2674014-7P	Diode IN5625		D1-4		4		4
124	HR-1322270-61	Resistor 27 Ω K1/2		r14	1			1
125	HR-1122104-61	Resistor 100 k Ω K1/8		r23	1			1
126	HCA-630N50-P4	Capacitor 5 μF 63WV		C10	1			1
127	HCU-101V10-T1	Resistor 0.01 μF 100WV		C14	1			1
128	HR-6022821-62	Resistor 820 Ω K8		r17	1			1
129	HR-1122222-61	Resistor 2.2 k Ω K1/8		r18	1			1
130	HR-1122121-61	Resistor 120 Ω K1/8		r20	1			1
131	HCR-201V22-S1	Capacitor 0.22 μF 200WV		C13	1			1
132	HR-1122102-61	Resistor 1 k Ω K1/8			1			1

## 4. PEDAL COMPONENTS



Ref. No.	Part No.	Description	Amt. Req.	Ref. No.	Part No.	Description	Amt. Req.
*1	D-9228-555-B00	Pedal shaft	1	29B	RE-0250000-K0	... Snap ring	4
2	D-9231-555-B00	Pedal bushing	2	36	D-9210-555-B00A	Switch adjusting spring	1
3A	SM-9061323-SN	... Screw	4	37	D-9218-555-B00	... Supporting plate	1
4	D-9229-555-B00	Pedal shaft bracket	2	38	SS-7111410-TK	... Screw	1
5	SS-9661230-SP	... Screw	2	39	D-9201-555-B00	Pedal	1
6	SM-9082023-SN	... Screw	2	*	D-7114-555-BA0	Connecting rod asm.	1
7	WP-0851216-SC	... Washer	2	40	D-7115-555-B00	Connecting rod (upper)	(1)
8A	NM-6080710-SN	... Nut	2	41	D-7130-555-B00	... Spring	(1)
9	SM-9061323-SN	Pedal shaft set screw	2	42	D-7113-555-B00	Sleeve	(1)
10	NM-6060610-SN	... Nut	1	43	RE-0500000-K0	... Snap ring	(1)
14	D-9202-555-B00B	Switch mounting box	1	44	NM-6060340-SN	Nut, for connecting rod	(2)
15	D-9203-555-B00	Pedal cover	1	45	D-7114-555-B00A	Connecting rod joint	(1)
17	D-9240-555-B00	Low-speed micro-switch	1	3B	SM-9061323-SN	... Screw	(1)
18	D-9212-555-B00	Thread trimmer switch spring	1	46	D-7116-555-B00	Connecting rod (lower)	(1)
8B	SS-7110740-TP	... Screw	2	47	D-7133-555-B00	Connecting rod spring	(1)
19	D-9204-555-B00	Thread trimmer micro-switch	1	54	D-9220-555-B00A	Stopper, for safety lever	1
20	D-9205-555-B00	... Cover	2	25	SM-4040601-SB	... Screw	2
21	SM-7033001-SD	... Screw	4	55	E-9645-001-000	Rubber bushing, for switch mounting box	1
22	WP-0370316-SD	... Washer	4	56	D-9215-555-B0A	Safety magnet plunger	1
23	D-9299-555-B00	... Set plate	2	57	D-9233-555-B00	Safety magnet fibre B	1
24	D-9215-555-B00	Safety magnet	1	58	D-9232-555-B00	Safety magnet fibre A	1
25	SM-4040601-SB	... Screw	4	60	E-1037-001-0S0	Pedal stopper screw	1
26	D-9219-555-B00	... Spring	1	61	NM-6100002-SB	... Nut	1
27	RE-0900000-K0	... Snap ring	1	62	D-9298-555-B00	... Set plate	1
28	D-9217-555-B00	Safety lever pin	1	63	SS-7151210-SP	... Screw	2
29A	RE-0250000-K0	... Snap ring	2	64	WP-0651056-SD	... Washer	2
30	D-9214-555-B00	Safety lever	1	65	NS-6150310-SP	... Nut	2
31	SD-0630275-SP	... Stud screw	1	(66)	WP-0501016-SD	Low-speed plate cam washer	(2)
32a	D-9213-555-B00A	... Mounting base	1	67	WP-0371016-SD	Washer for micro-switch set plate	4
32b	D-9243-555-B00	Low-speed micro-switch mounting base	1	68	B-1180-541-000	Rubber bushing	1
8C	SS-7110740-TP	... Screw	5				
33	D-9207-555-B00	Low-speed micro-switch	1				
34	D-9208-555-B00A	Low-speed plate cam	1				
PD	SS-7110740-TP	... Screw	2				
34a	WP-0501016-SD	... Washer	2				
(66)	D-9242-555-B00	... Spacer	(2)				
35	D-9209-555-B00	Switch set shaft	2				

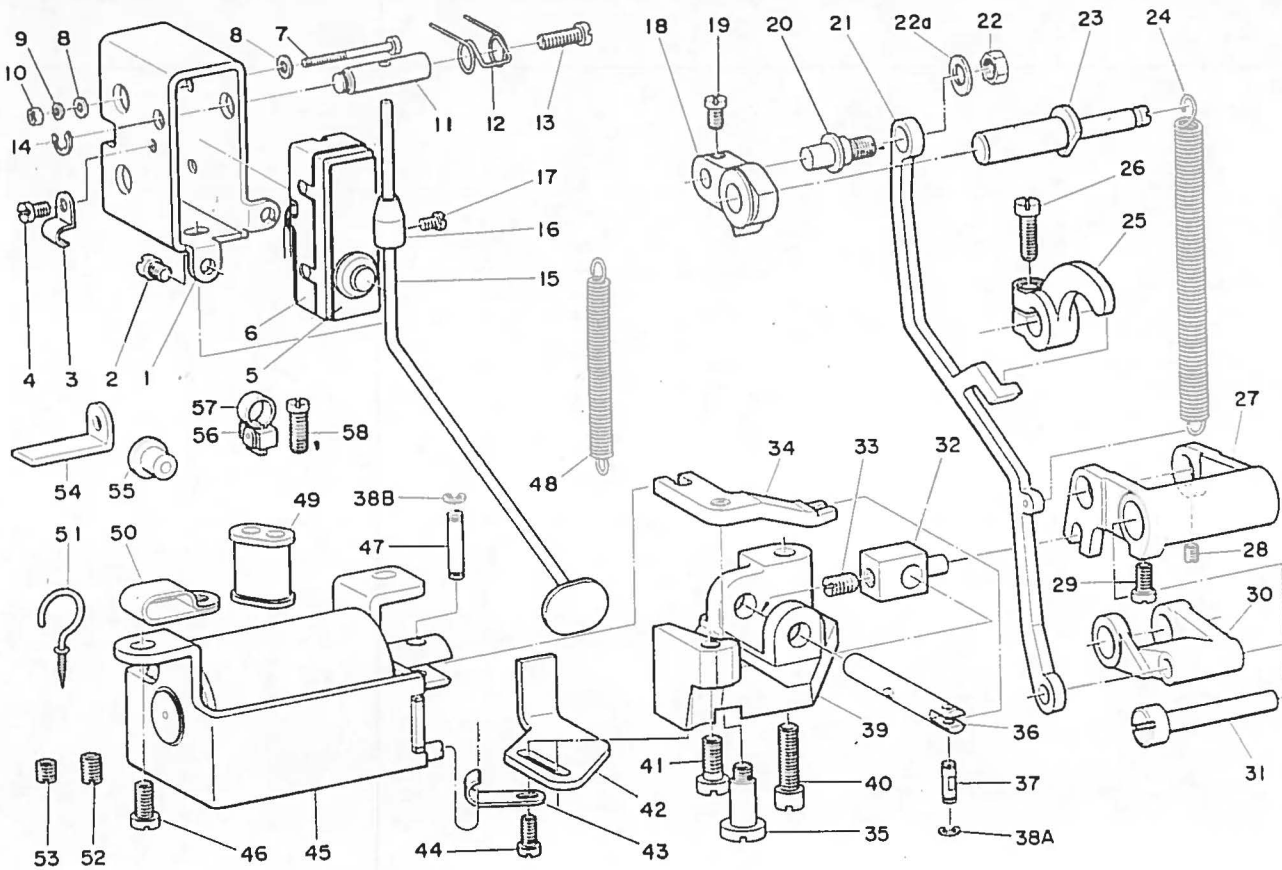
## 5. EXCLUSIVE PARTS FOR WIPER



Ref. No.	Part No.	Description	Amt. Req.	Ref. No.	Part No.	Description	Amt. Req.
1	SS-7110820-SP	Cover set screw, for thread take-up	1	21	D-2104-555-B00A	Wiper	1
2A	SM-4040601-SB	Screw, for wiper magnet	4	22	SS-7090710-SP	. . . Screw	1
3	WP-0480856-SD	Washer	4	23	D-2114-555-B00	Bracket installing collar	2
4	SS-7110340-SP	Screw, for base cover	3	24	D-2110-555-B00	Micro-switch asm.	1
5	D-2101-555-B00B	Magnet installing base	1	24a	WP-0370316-SD	. . . Washer	1
6	SS-7110710-SP	. . . Screw	1	25	M-AO1-1514-000	Actuator	1
7	D-2111-555-B00B	. . . Cover	1	26	M-AO1-1512-000	Tube (A)	3
8	NM-6043212-SB	Plunger stopper nut	2	27	D-2611-555-B00	Cable holder	1
34	WS-0411002-KB	. . . Washer	1	2B	SM-4040601-SB	. . . Screw	1
35	MAT-80115-T00	Plunger stopper washer	1	28	D-6037-555-B00	6-core cabtyre cords	1.5m
9	M-AO1-1539-000	Tube (D)	2	29	D-2116-555-B00	Micro-switch installing base	1
10	D-2117-555-B00A	Wiper magnet asm.	1	2C	SM-4040601-SB	. . . Screw	2
11	D-2118-555-B00A	Plunger	1	30	D-6051-555-B00	Closure A	1
12	MAT-80113-T00	Spring, for magnet	1	31	D-6050-555-B00	Wire band	0.05m
13	RE-0901110-K0	Snap ring, for plunger	1	32	D-6029-555-B00	6-hole nylon plug (black)	1
14	D-2107-555-B00	Wiper link shaft A	1		D-6001-555-B00	Plug cover	1
15A	RE-0250000-K0	. . . Snap ring	2		D-6043-555-B00	Pin-shape terminal, male	6
16	D-2102-555-B00	Connecting link	1	33	D-2113-555-B00	Cord holder B	2
15B	RE-0250000-K0	. . . Snap ring	1				
17	D-2103-555-B00A	Wiper driving shaft	1				
18	RE-0500000-K0	. . . Snap ring	1				
19	D-2105-555-B00	. . . Bracket	1				
20	SS-7112420-SP	. . . . . Screw	2				

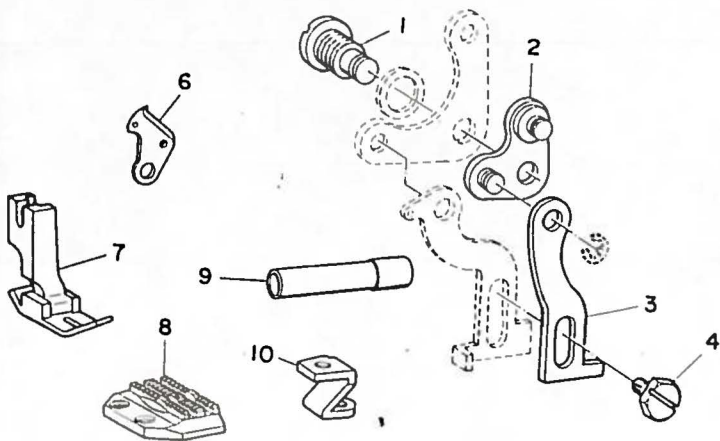


## 6. EXCLUSIVE PARTS FOR REVERSE FEED MECHANISM COMPONENTS



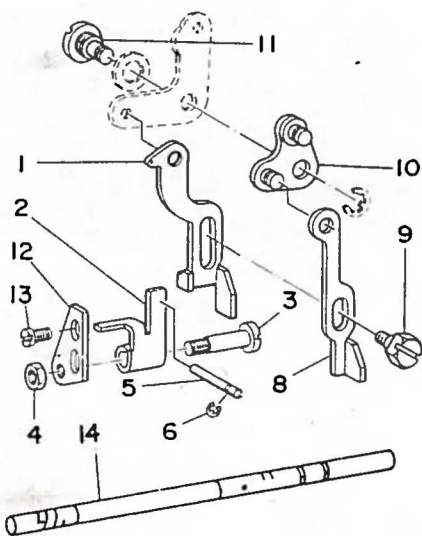
Ref. No.	Part No.	Description	Amt. Req.	Ref. No.	Part No.	Description	Amt. Req.
1	D-1627-555-B00	Reverse feed switch mounting base	1	31	D-1615-555-B00	Pin	1
2	SS-7110740-TP	Screw	2	32	D-1613-555-B00	Reverse feed connecting block	1
3	B-3538-112-000	Cord holder	1	33	SS-8660970-TP	Screw	1
4	SS-7110410-SP	Screw	1	34	D-1614-555-B00	Reverse feed plunger connecting arm	1
5	D-9204-555-B00	Reverse feed switch Z-15D	1	35	SD-0791331-SP	Hinge screw	1
6	D-9205-555-B00	Cover	1	36	D-1612-555-B00	Reverse feed shaft	1
7	SM-4033001-SC	Screw	2	37	D-1620-555-B00	Connecting pin (A)	1
8	WP-0330501-SB	Washer	4	38A	RE-0300000-K0	Snap ring	2
9	WS-0310702-KB	Spring washer	2	39	D-1611-555-B00	Reverse feed base	1
10	NM-6030000-SB	Nut	2	40	SS-6152440-SP	Screw (B)	1
11	D-1628-555-B00	Shaft, for reverse feed switch lever	1	41	SS-6151440-SP	Screw (A)	1
12	D-1635-555-B00	Spring, for reverse feed switch lever	1	42	D-1632-555-B00	Reverse feed amount limited arm	1
13	SS-7111410-SP	Screw, for reverse feed switch lever	1	43	D-1630-555-B00	Cord holder	1
14	RE-0500000-K0	Snap ring, for shaft	1	44	SS-6111210-SP	Screw	2
15	D-1625-555-BA0	Reverse feed switch lever asm.	1	45	D-6117-555-BA0	Reverse feed magnet asm.	1
16	D-1636-555-B00	Adjusting bar	1		D-6117-555-BAE	Reverse feed magnet asm. E	(1)
17	SS-7090410-SP	Screw	1	46	SS-7150940-SP	Screw	2
18	D-1618-555-B00	Feed regulator	1	47	D-1621-555-B00	Connecting pin (B)	1
19	SS-7110720-SP	Screw	1	38B	RE-0300000-K0	Snap ring	2
20	D-1633-555-B00A	Connecting rod pin	1	48	B-2612-047-000	Tension spring, for reverse feed lever	1
21	D-1619-555-B00A	Connecting rod	1	49	D-1634-555-B00	Rubber bushing	1
22	NS-6660430-SP	Nut	2	50	D-2112-555-B00	Cord holder	2
22a	WP-0651056-SP	Washer	1	51	D-2113-555-B00	Cord holder B	1
23	D-1623-555-B00	Hinge pin	1	52	SS-8150760-TP	Screw, for hook driving shaft bushing	1
24	D-1624-555-B00	Tension spring	1	53	SS-8150510-TP	Screw, for feed rocker shaft bushing	1
25	D-1622-555-B00	Control lever crank	1	54	D-3166-555-B00	Magnet presser plate	1
26	SS-7121410-SP	Screw	1	55	B-1117-552-000	Rubber plug	1
27	D-1616-555-B00	Feed driving rocker	1	56	D-6052-555-B00	Closure B	5
28	SS-8110510-TP	Set screw, for feed driving rocker arm pin	1	57	D-6050-555-B00	Cord wire	1
29	SS-7621040-SP	Pin set screw (B)	1	58	SS-6121230-SP	Clamp screw, for crank	1
30	D-1617-555-B00	Feed driving rocker arm	1		D-1101-555-BA0	Frame & bed asm.	(1)

7. EXCLUSIVE PARTS FOR DLN-415-2



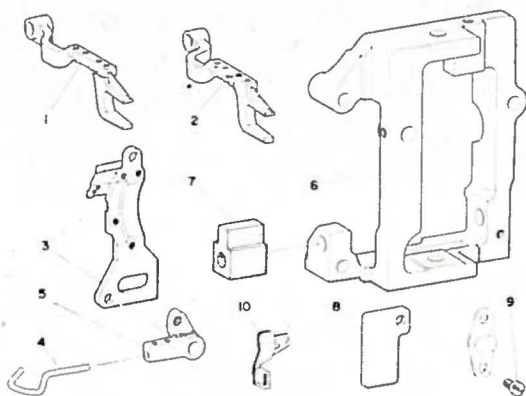
Ref. No.	Part No.	Description	Amt. Req.
1	D-1517-415-B00	Lifting lever hinge pin	1
2	D-3157-415-BA0	Lifting lever link asm.	1
3	D-3156-415-B00	Tension release plate	1
4	SD-0640472-SP	Lifting lever hinge screw	1
6	D-2402-415-BA0	Moving knife asm.	1
7	D-1524-415-BAA	Presser foot (A) asm.	1
	D-1524-415-BAB	Presser foot (B) asm. for light weight materials	(1)
8	D-1609-415-B00	Feed dog	1
9	D-2469-415-B00	Tube, for magnet cord	1
10	D-1632-415-B00	Tension spring suspension	1

8. EXCLUSIVE PARTS FOR DLU-450-2



Ref. No.	Part No.	Description	Amt. Req.
1	D-1515-450-B00A	Lifting lever	1
2	D-3157-450-B00A	Thread tension release plate	1
3	D-3158-450-B00A	... Shaft	1
4	NS-6090310-SP	... Nut	1
5	D-3127-450-B00	Tension release supporting pin	1
6	RE-0250000-K0	... Snap ring	1
8	D-3156-450-B00A	Tension release link	1
9	SD-0630275-SP	Lifting lever hinge screw	1
10	D-3157-415-BA0A	Lifting lever link asm.	1
11	D-1517-415-B00	Lifting lever hinge pin	1
12	D-3159-450-B00	Thread tension release plate mounting base	1
13	SS-6090510-SP	... Screw	2
14	D-1201-450-B00	Main shaft	1

9. EXCLUSIVE PARTS FOR DLD-432-2



Ref. No.	Part No.	Description	Amt. Req.
1	D-1608-432-B00	Differential feed bar	1
2	D-1607-432-B00	Main feed bar	1
3	D-2401-432-B00A	Knife mounting base	1
4	D-2408-432-B00A	Take-up thread picker	1
5	D-2420-432-B00	... Mounting bracket	1
6	D-2412-432-B00	Thread trimmer mounting base	1
7	D-2426-432-B00	Oil sponge	1
8	D-2422-432-B00	Groove cover	1
9	SS-7110740-TP	Screw (B), for oil holder	1
10	D-2405-432-B00	Thread guide, for knife	1

**JUKI**®  
**TOKYO JUKI INDUSTRIAL CO., LTD.**  
 Business Office : 23, Kabuki-cho, Shinjuku-ku, Tokyo, Japan  
 Cable Address : JUKI TOKYO  
 Telex : 232-2301  
 Telephone : Tokyo 203-8241

